

Typical Details

Saint-Gobain weberoof SPF

Fully bonded long-lasting roofing system, for waterproofing and thermal insulation of flat and low slope roofs



SOLAR REFLECTANCE

> 78

SRI



THERMAL INSULATION

0.3 - 0.14

W/m²K

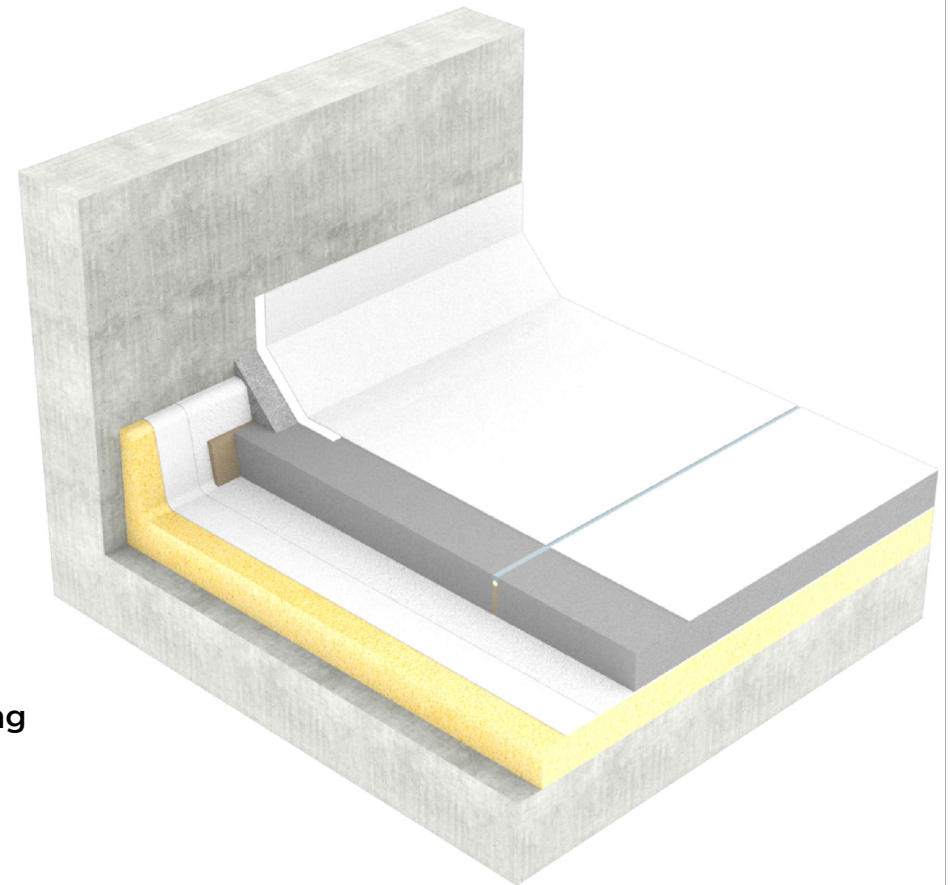


IMPERMEABILITY

5bar

DIN 1048

(Performances above are dependent on specification)



Key facts

- Fully bonded insulating and waterproofing system
- Insulating properties meeting local and international green building requirements
- Topcoat with an SRI to prevent heat island effect on roof
- Topcoat EPD certified as per EN 15804 and ISO 14025
- Designed to last 25 years with minimum maintenance cost

+971 (0)4 814 3666

weber.dubai-uae@saint-gobain.com

www.middleeast.weber


SAINT-GOBAIN

Contents

Section	Title
1	Weberroof SPF
2	Roof waterproofing section with joint detail
3	Roof parapet drain detail
4	Roof pipe penetration detail
5	Roof upstand detail

weberdry 116FX SP flexible cement based waterproofing coating or weberdry roof mono component acrylic based waterproofing coating applied at 1.2mm thickness uniformly on top of weberfloor rapid screed in 2 coats

weberdry Fabric FX non woven fabric used to reinforce corners

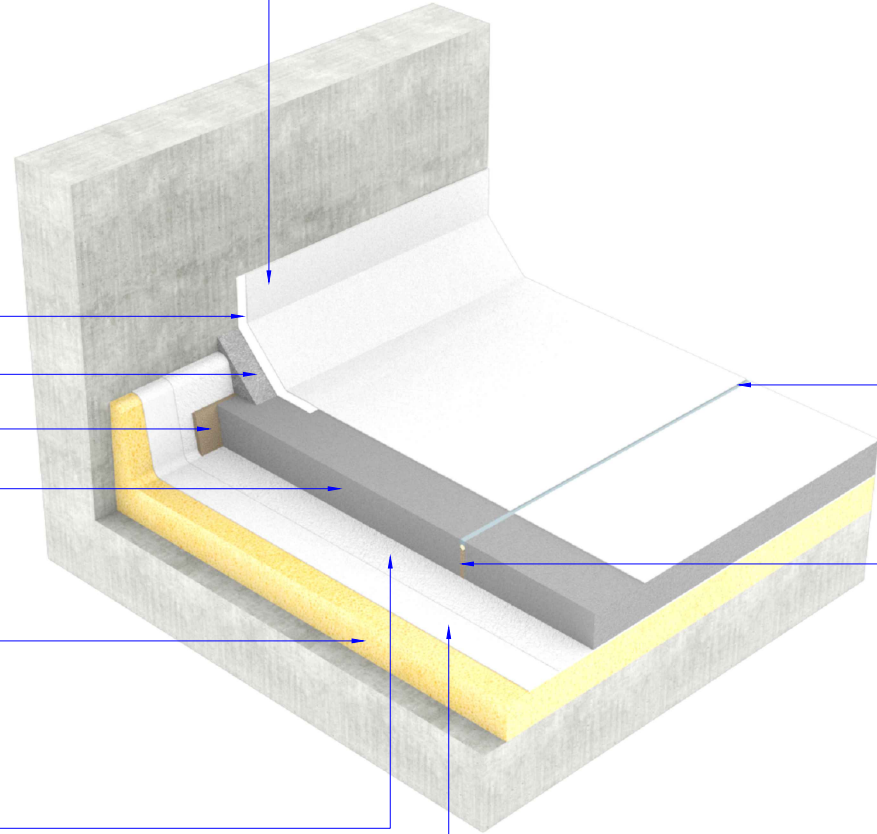
weberrep ST angle fillet

weber filler board PE

weberfloor rapid screed is applied on an average 70mm thickness uniformly across the top of the Geotextile white PP protection layer to achieve minimum 2% slope

weberdry SPF 45, two-component spray applied polyurethane foam 44kg/m³ minimum density is applied at minimum 70mm thick uniformly across the top of the concrete slab

Geotextile white PP protection layer 125g/m² minimum density



weber Jointseal PU MC (trafficable sealant) applied through out the joint with weber backing rod / bond breaker tape (by others)

Control joints designed in screed using weber filler board PE at minimum 10mm width

weberdry 116FX SP flexible cement based waterproofing coating or weberdry roof mono component acrylic based waterproofing coating applied at 1.2mm thickness uniformly on top of weberdry SPF 45 in 2 coats

Weberroof SPF

This drawing is provided to customers upon request, by Saint-Gobain Weber and remains the property of Saint-Gobain Group which owns all copyrights accordingly. This drawing and its details are provided against the accuracy of the information provided to Saint-Gobain at the time of the request and might not reflect the exact site conditions. The information issued in this drawing must not be used other than by the intended recipient, neither shared with any third-party or modified without the prior consent of Saint-Gobain. No liability can be borne by any entity of Saint-Gobain Group with regards to the use of this drawing and its details if modified in any way. This drawing does not replace any of the associated technical or specification documents, or current literature provided by Saint-Gobain. Where conflicting information is apparent, Saint-Gobain must be informed and will advise on the correct detailing and specification to follow. This drawing has been generated for the customer, and is provided for a specific project and is not to be used, reproduced, copied or distributed for any other project with different performance requirements. Saint-Gobain acts only as supplier of the systems and provides this drawing as guidance and in good faith. It is customers' responsibility to ensure compliance of the drawing and its details with the specific project requirements and as per the applicable federal, state and local regulations.

Title
**Saint-Gobain
 weberroof SPF**

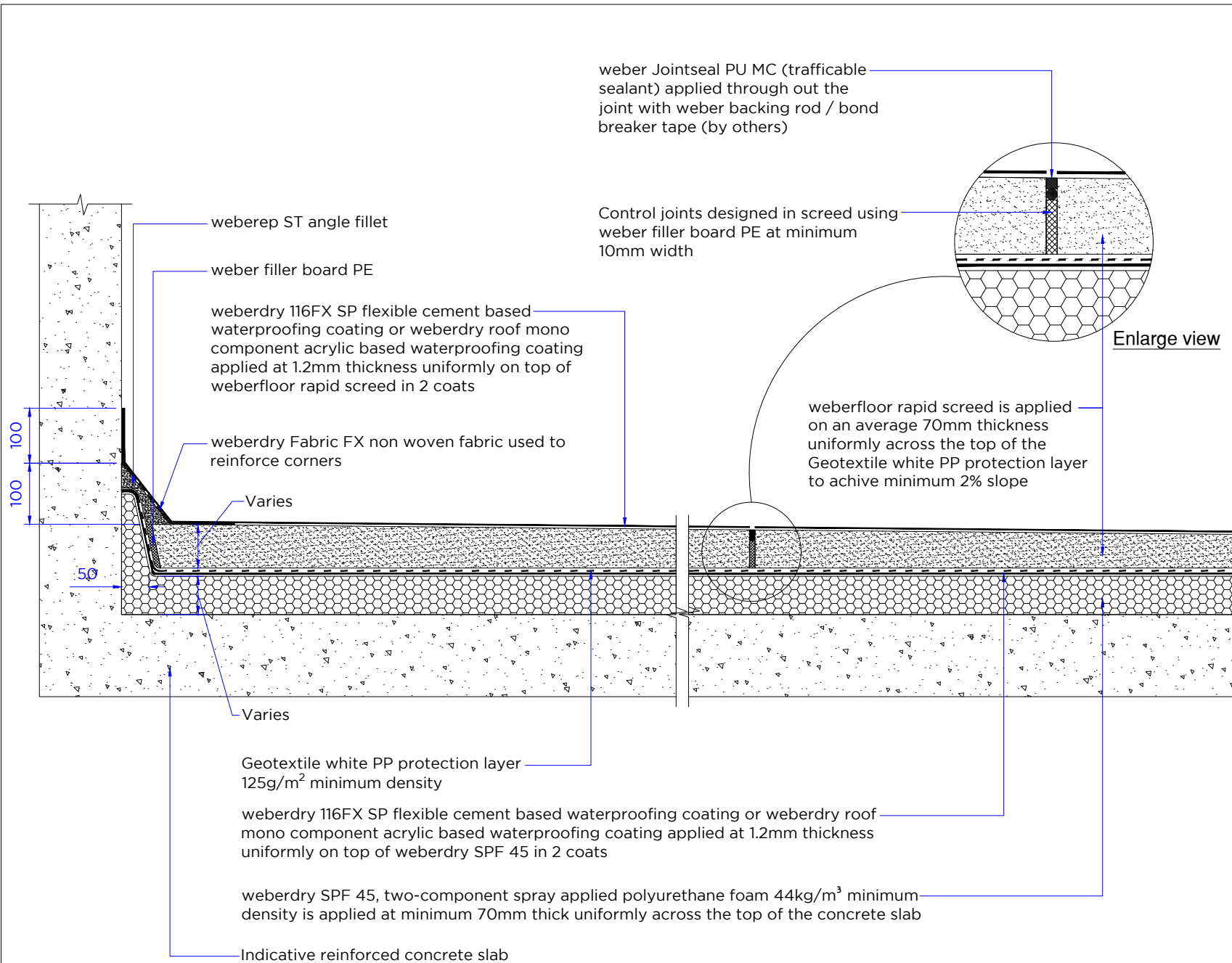
Drawing No
SGWR/SPF/101

Date	Scale @ A4	Rev
06.10.21	1:2	0

All dims. are in mm (unless otherwise specified)



+971 (0)4 814 3666
 weber.dubai-uae@saint-gobain.com
 www.middleeast.weber



weber Jointseal PU MC (trafficable sealant) applied through out the joint with weber backing rod / bond breaker tape (by others)

Control joints designed in screed using weber filler board PE at minimum 10mm width

Enlarge view

weberfloor rapid screed is applied on an average 70mm thickness uniformly across the top of the Geotextile white PP protection layer to achive minimum 2% slope

weberrep ST angle fillet

weber filler board PE

weberdry 116FX SP flexible cement based waterproofing coating or weberdry roof mono component acrylic based waterproofing coating applied at 1.2mm thickness uniformly on top of weberfloor rapid screed in 2 coats

weberdry Fabric FX non woven fabric used to reinforce corners

Varies

Varies

Geotextile white PP protection layer 125g/m² minimum density

weberdry 116FX SP flexible cement based waterproofing coating or weberdry roof mono component acrylic based waterproofing coating applied at 1.2mm thickness uniformly on top of weberdry SPF 45 in 2 coats

weberdry SPF 45, two-component spray applied polyurethane foam 44kg/m³ minimum density is applied at minimum 70mm thick uniformly across the top of the concrete slab

Indicative reinforced concrete slab

This drawing is provided to customers upon request, by Saint-Gobain Weber and remains the property of Saint-Gobain Group which owns all copyrights accordingly. This drawing and its details are provided against the accuracy of the information provided to Saint-Gobain at the time of the request and might not reflect the exact site conditions. The information issued in this drawing must not be used other than by the intended recipient, neither shared with any third-party or modified without the prior consent of Saint-Gobain. No liability can be borne by any entity of Saint-Gobain Group with regards to the use of this drawing and its details if modified in any way. This drawing does not replace any of the associated technical or specification documents, or current literature provided by Saint-Gobain. Where conflicting information is apparent, Saint-Gobain must be informed and will advise on the correct detailing and specification to follow. This drawing has been generated for the customer, and is provided for a specific project and is not to be used, reproduced, copied or distributed for any other project with different performance requirements. Saint-Gobain acts only as supplier of the systems and provides this drawing as guidance and in good faith. It is customers' responsibility to ensure compliance of the drawing and its details with the specific project requirements and as per the applicable federal, state and local regulations.

Title
Saint-Gobain weberroof SPF

Drawing No
SGWR/SPF/102

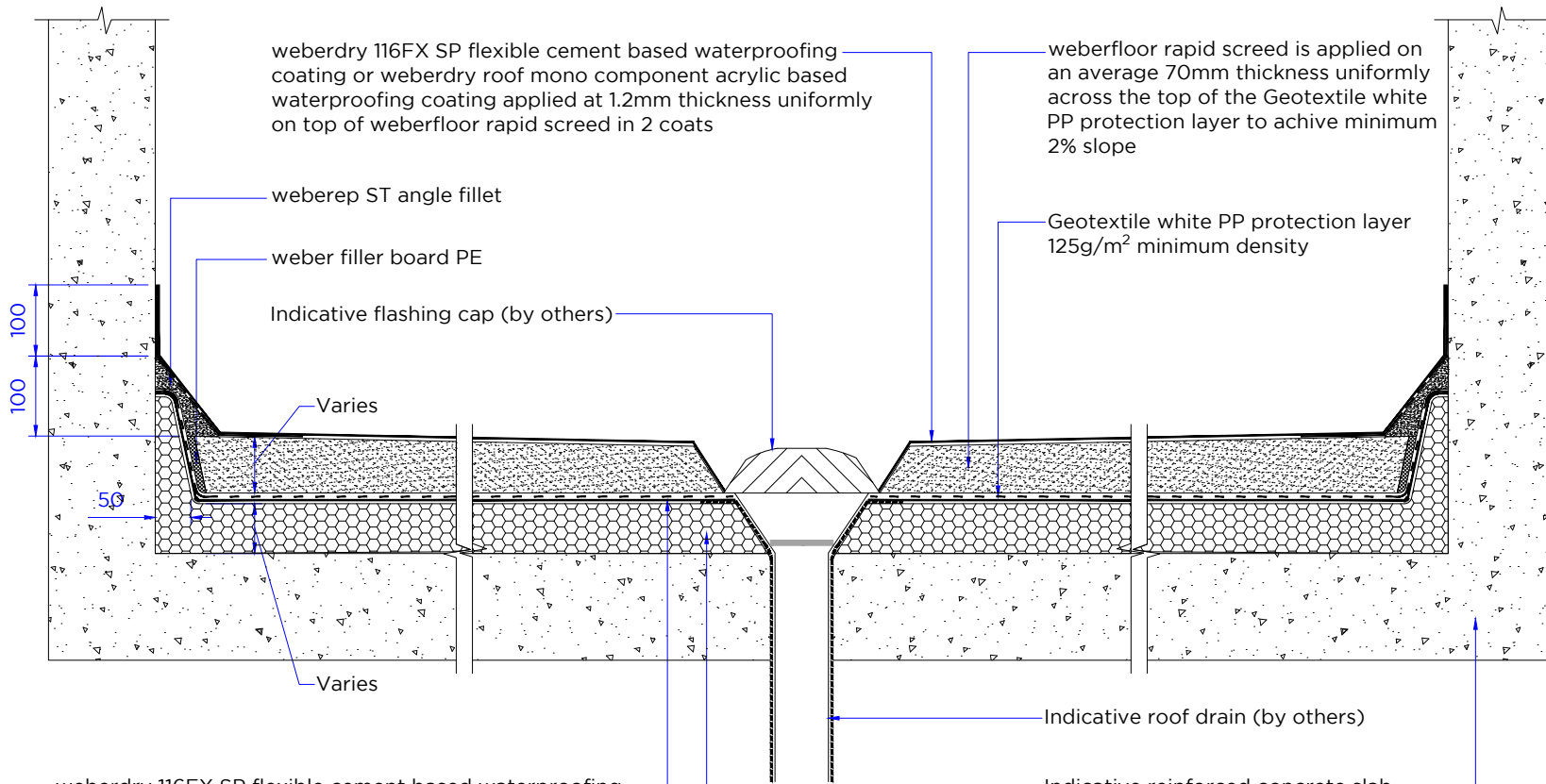
Date	Scale @ A4	Rev
06.10.21	1:10	0

All dims. are in mm (unless otherwise specified)



+971 (0)4 814 3666
weber.dubai-uae@saint-gobain.com
www.middleeast.weber

Roof waterproofing section with joint detail



This drawing is provided to customers upon request, by Saint-Gobain Weber and remains the property of Saint-Gobain Group which owns all copyrights accordingly. This drawing and its details are provided against the accuracy of the information provided to Saint-Gobain at the time of the request and might not reflect the exact site conditions. The information issued in this drawing must not be used other than by the intended recipient, neither shared with any third-party or modified without the prior consent of Saint-Gobain. No liability can be borne by any entity of Saint-Gobain Group with regards to the use of this drawing and its details if modified in any way. This drawing does not replace any of the associated technical or specification documents, or current literature provided by Saint-Gobain. Where conflicting information is apparent, Saint-Gobain must be informed and will advise on the correct detailing and specification to follow. This drawing has been generated for the customer, and is provided for a specific project and is not to be used, reproduced, copied or distributed for any other project with different performance requirements. Saint-Gobain acts only as supplier of the systems and provides this drawing as guidance and in good faith. It is customers' responsibility to ensure compliance of the drawing and its details with the specific project requirements and as per the applicable federal, state and local regulations.

Title
Saint-Gobain
weberroof SPF

Drawing No
SGWR/SPF/103

Date	Scale @ A4	Rev
06.10.21	1:10	0

All dims. are in mm (unless otherwise specified)



+971 (0)4 814 3666
 weber.dubai-uae@saint-gobain.com
 www.middleeast.weber

Roof parapet drain detail

Indicative pipe penetration

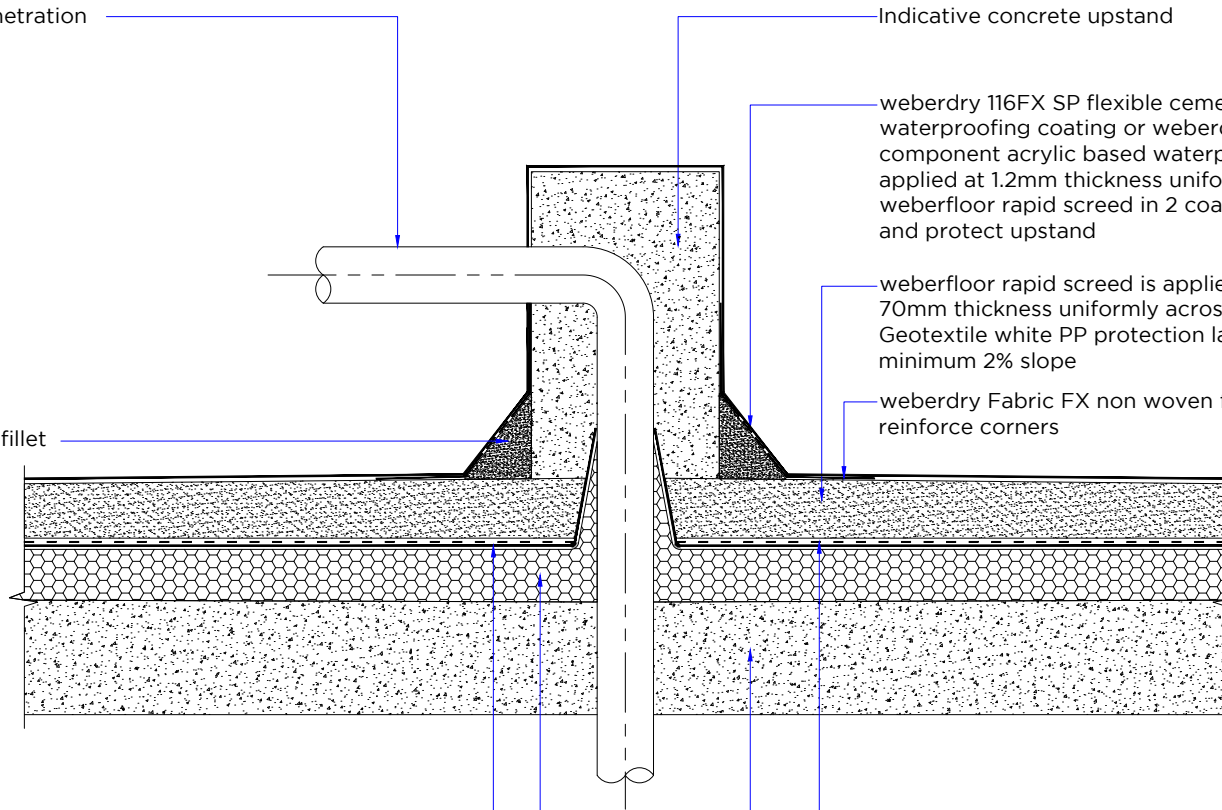
Indicative concrete upstand

weberdry 116FX SP flexible cement based waterproofing coating or weberdry roof mono component acrylic based waterproofing coating applied at 1.2mm thickness uniformly on top of weberfloor rapid screed in 2 coats to completely cover and protect upstand

weberfloor rapid screed is applied on an average 70mm thickness uniformly across the top of the Geotextile white PP protection layer to achieve minimum 2% slope

weberdry Fabric FX non woven fabric used to reinforce corners

weberep ST angle fillet



weberdry 116FX SP flexible cement based waterproofing coating or weberdry roof mono component acrylic based waterproofing coating applied at 1.2mm thickness uniformly on top of weberdry SPF 45 in 2 coats

weberdry SPF 45, two-component spray applied polyurethane foam 44kg/m³ minimum density is applied at minimum 70mm thick uniformly across the top of the concrete slab

Geotextile white PP protection layer 125g/m² minimum density

Indicative reinforced concrete slab

This drawing is provided to customers upon request, by Saint-Gobain Weber and remains the property of Saint-Gobain Group which owns all copyrights accordingly. This drawing and its details are provided against the accuracy of the information provided to Saint-Gobain at the time of the request and might not reflect the exact site conditions. The information issued in this drawing must not be used other than by the intended recipient, neither shared with any third-party or modified without the prior consent of Saint-Gobain. No liability can be borne by any entity of Saint-Gobain Group with regards to the use of this drawing and its details if modified in any way. This drawing does not replace any of the associated technical or specification documents, or current literature provided by Saint-Gobain. Where conflicting information is apparent, Saint-Gobain must be informed and will advise on the correct detailing and specification to follow. This drawing has been generated for the customer, and is provided for a specific project and is not to be used, reproduced, copied or distributed for any other project with different performance requirements. Saint-Gobain acts only as supplier of the systems and provides this drawing as guidance and in good faith. It is customers' responsibility to ensure compliance of the drawing and its details with the specific project requirements and as per the applicable federal, state and local regulations.

Title
**Saint-Gobain
weberroof SPF**

Drawing No
SGWR/SPF/104

Date	Scale @ A4	Rev
06.10.21	1:10	0

All dims. are in mm (unless otherwise specified)



+971 (0)4 814 3666
weber.dubai-uae@saint-gobain.com
www.middleeast.weber

Roof pipe penetration detail

This drawing is provided to customers upon request, by Saint-Gobain Weber and remains the property of Saint-Gobain Group which owns all copyrights accordingly. This drawing and its details are provided against the accuracy of the information provided to Saint-Gobain at the time of the request and might not reflect the exact site conditions. The information issued in this drawing must not be used other than by the intended recipient, neither shared with any third-party or modified without the prior consent of Saint-Gobain. No liability can be borne by any entity of Saint-Gobain Group with regards to the use of this drawing and its details if modified in any way. This drawing does not replace any of the associated technical or specification documents, or current literature provided by Saint-Gobain. Where conflicting information is apparent, Saint-Gobain must be informed and will advise on the correct detailing and specification to follow. This drawing has been generated for the customer, and is provided for a specific project and is not to be used, reproduced, copied or distributed for any other project with different performance requirements. Saint-Gobain acts only as supplier of the systems and provides this drawing as guidance and in good faith. It is customers' responsibility to ensure compliance of the drawing and its details with the specific project requirements and as per the applicable federal, state and local regulations.

Title
**Saint-Gobain
 weberroof SPF**

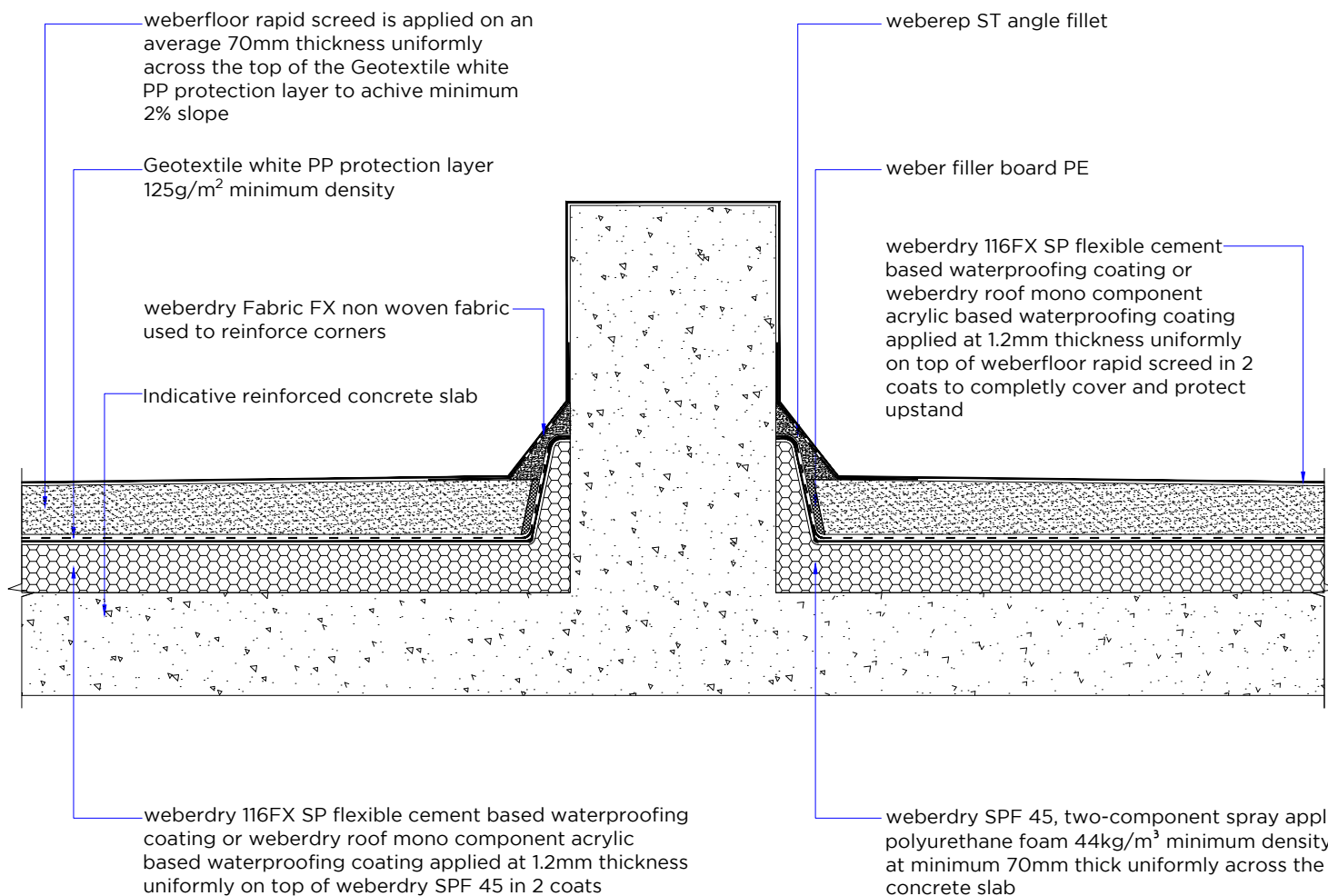
Drawing No
SGWR/SPF/105

Date	Scale @ A4	Rev
06.10.21	1:10	0

All dims. are in mm (unless otherwise specified)



+971 (0)4 814 3666
 weber.dubai-uae@saint-gobain.com
 www.middleeast.weber



weberfloor rapid screed is applied on an average 70mm thickness uniformly across the top of the Geotextile white PP protection layer to achieve minimum 2% slope

Geotextile white PP protection layer 125g/m² minimum density

weberdry Fabric FX non woven fabric used to reinforce corners

Indicative reinforced concrete slab

weberdry 116FX SP flexible cement based waterproofing coating or weberdry roof mono component acrylic based waterproofing coating applied at 1.2mm thickness uniformly on top of weberdry SPF 45 in 2 coats

weberrep ST angle fillet

weber filler board PE

weberdry 116FX SP flexible cement based waterproofing coating or weberdry roof mono component acrylic based waterproofing coating applied at 1.2mm thickness uniformly on top of weberfloor rapid screed in 2 coats to completely cover and protect upstand

weberdry SPF 45, two-component spray applied polyurethane foam 44kg/m³ minimum density is applied at minimum 70mm thick uniformly across the top of the concrete slab

Roof upstand detail